

# WHAT WE DO

University life can have its ups and downs. Occasionally you may find yourself in need of independent advice and guidance.

This is where the Student Union Advice Service comes in. We will sit down with you to discuss your problem, big or small and outline what options are available to you, along with the pros and cons of those options.

Only when you are in possession of all the relevant information can you make the right decision for yourself.

Leeds Met Student Union Advice Service provides a wide range of information, advice and representation to students.

From problems with your landlord to worries about your course, we are here to try and help.

All the staff are professional advisers and can offer free, independent, non-judgemental and confidential advice on any problem or query, no matter how big or small.



## CONTACT US

Tel: **0113 812 8408**

Email: **su.studentadvice@**

**leedsmet.ac.uk**

Web: **www.leedsmetSU.co.uk**

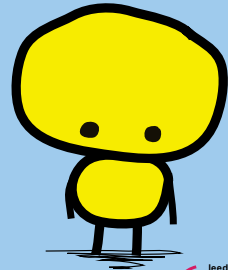
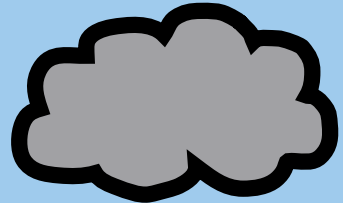
Please see the 'Support and Advice' section on the Student Union Website for up to date details of opening hours and drop-in sessions at Civic and Headingley campuses.



Leeds Met Students' Union  
**Students' Union Advice Service**

1st floor Woodhouse Building  
Civic Quarter Campus  
Calverley Street  
Leeds  
LS1 3HE

## FOR LIVES UP AND DOWNS



Independent, Confidential Advice and Information for you

# HOW WE CAN HELP . . .

These are just some examples of the wide variety of issues we can advise on. You can contact us about anything- if we can't help, we will do our best to put you in touch with someone who can.

## HOUSING

House hunting / Checking your tenancy agreement / Problems with deposits / Disrepair / Getting behind with your rent / Problems with your landlord

## ACADEMIC

Complaints against the University / Appealing the decision of a Board of Examiners / Disciplinary matters / Plagiarism, collusion, cheating & other forms of Unfair Practice / Personal circumstances impacting on your performance

## MONEY

Student Finance / Debts / Budgeting

Besides offering advice on a wide range of issues we can also make referrals to other agencies. Often students face problems that affect them emotionally. We are unable to offer help with emotional problems, but can signpost you on to the university counselling service or other agencies.

*The Student Union Advice Service got me through a very tough time during my studies. They provided the support I needed and more, and I could not have managed without them.*

**Francis Byrne**  
4th Yr Sports Development

*The help and support at each visit was very reassuring. The information given was valuable and accurate. I am absolutely recommending this service to my friends at the university. In future, I won't hesitate going back to seek advice from them.*

**Amina Manduri**  
1st Year Business and Management